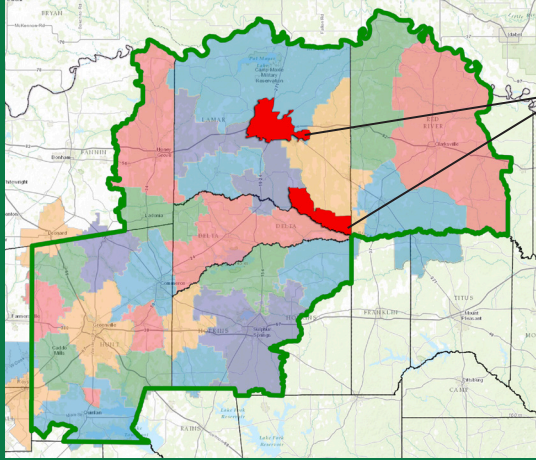




## BY THE NUMBERS

### 4<sup>th</sup> Smallest Tax Base in Texas\*



Current PJC Taxing District

Only 2% of Paris Junior College's service area pays taxes to support the college.

#### PJC Service Area:

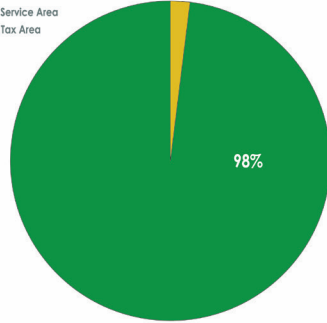
Approximately 3,848 square miles

#### PJC Taxing District:

Approximately 79 square miles

\*Texas Association of Community College data reported by Colleges 2016

Service Area District vs. Tax District Area



### PJC's ECONOMIC IMPACT:

# \$141.7 MILLION\*

\* EMSI 2013 PJC Economic Impact Study

### PJC Return on Investment

Taxpayers see an annual return of 14.9% on each dollar invested in PJC\*, compared to an annual return of 6.9% on taxpayer investment statewide in Texas Community Colleges.†

PJC students see an average annual rate of return of 20.3% for every \$1 invested in their education at PJC.‡

\* EMSI 2013 PJC Economic Impact Study

† EMSI 2010 Texas Community Colleges Impact Study

‡ EMSI 2013 PJC Economic Impact Study

### Associate Degrees & Certificates awarded:

2014-2015

# 1,029

2015-2016

# 1,111

Total full- and part-time employees:

# 435

### Enrolled Students 2015-16

# 5,000

CREDIT STUDENTS

# 1,800

NON-CREDIT STUDENTS

Upon annexation, tax rate = **\$0.085/\$100** taxable valuation

While state funding has decreased over the years, Paris Junior College's peer institutions have expanded their taxing districts to compensate. The chart below compares the total taxable property values in peer institutions' tax districts to that of Paris Junior College.

### Proposed In-District Property Taxes\*:

ASSESSED PROPERTY VALUE	MONTHLY TAX	YEARLY TAX
\$ 50,000	\$ 3.54	\$ 42.50
\$ 75,000	\$ 5.31	\$ 63.75
\$100,000	\$ 7.08	\$ 85.00
\$150,000	\$10.63	\$127.50
\$200,000	\$14.17	\$170.00

\* Exemptions Apply: Senior (over 65) Exemption of \$10,000; Senior Tax Freeze; State Disability Exemption; Agriculture Exemption.

COMMUNITY COLLEGE	FISCAL YEAR 2016 ASSESSED VALUE
Grayson County College	\$ 8,338,197,014
Kilgore College	\$ 3,897,814,330
Northeast Texas Community College	\$ 4,141,992,370
Paris Junior College	\$ 1,578,732,719
Texarkana College	\$ 5,191,936,333
Tyler Junior College	\$10,173,480,269
Trinity Valley Community College	\$ 8,215,490,106

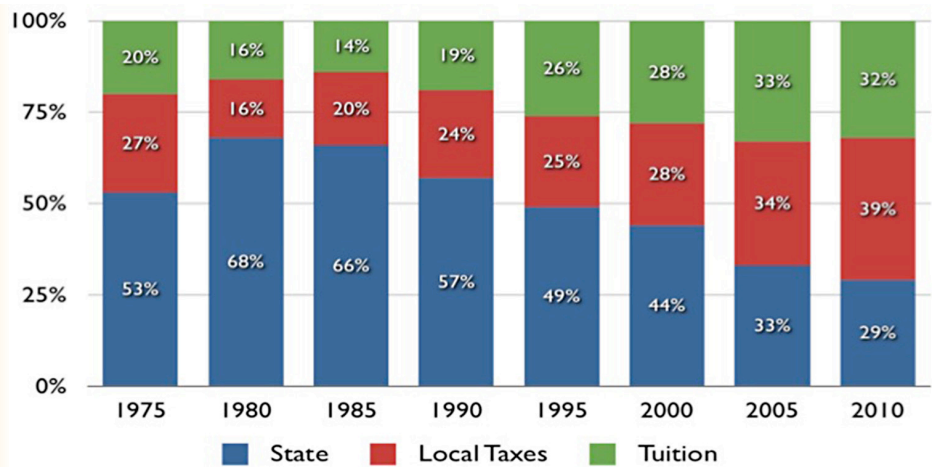
Texas Association of Community College data reported by Colleges 2016

# \$478,600

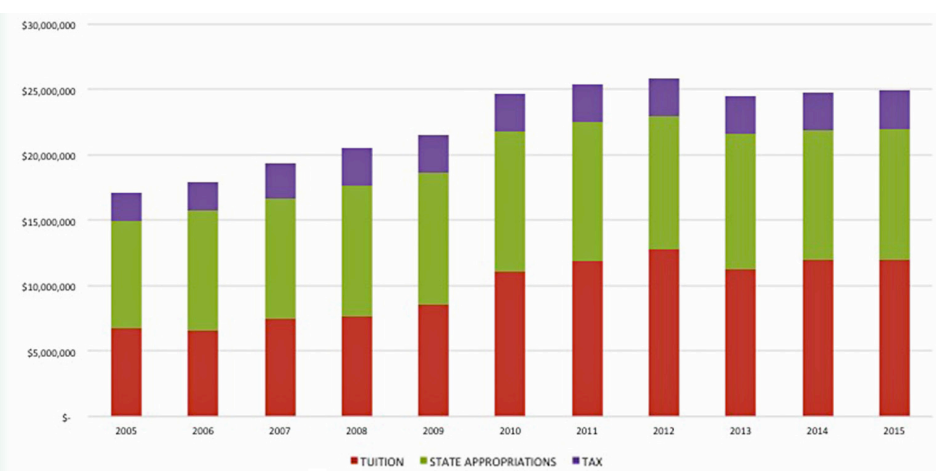
The difference in earnings over a working lifetime of associate degree grads in Texas vs. high school graduates in Texas. - Texas Association of Community Colleges

Dual Credit Students Fall 2016		Total Enrolled Students Fall 2015 <small>(from within the PJC Service Area)</small>	
DELTA COUNTY	27	DELTA COUNTY	131
FANNIN COUNTY	43	FANNIN COUNTY	136
HOPKINS COUNTY	323	HOPKINS COUNTY	801
HUNT COUNTY	601	HUNT COUNTY	1,555
LAMAR COUNTY	458	LAMAR COUNTY	1,376
RED RIVER COUNTY	85	RED RIVER COUNTY	165
<b>TOTAL</b>	<b>1,537</b>	<b>TOTAL</b>	<b>4,164</b>

## Trend of State Support for Community Colleges



## PJC Revenue by Source



PJC's low tuition offers significant savings for students, both dual credit and traditional.

COLLEGE/UNIVERSITY TUITION COMPARISON	TUITION & FEES FOR 30 SEMESTER CREDIT HOURS
Dual Credit Courses at PJC In-District	\$ 1,200
Dual Credit Courses at PJC Out-of-District	\$ 1,500
Traditional Courses at PJC In-District	\$ 2,250
Traditional Courses at PJC Out-of-District	\$ 3,600
Texas A&M University - Texarkana	\$ 7,036
Texas A&M University - Commerce	\$ 7,432
Stephen F. Austin University	\$ 9,342
Texas A&M University - College Station	\$ 9,428
University of Texas - Austin	\$ 9,816
University of North Texas	\$11,082
Baylor University	\$40,738

SOURCE: College websites