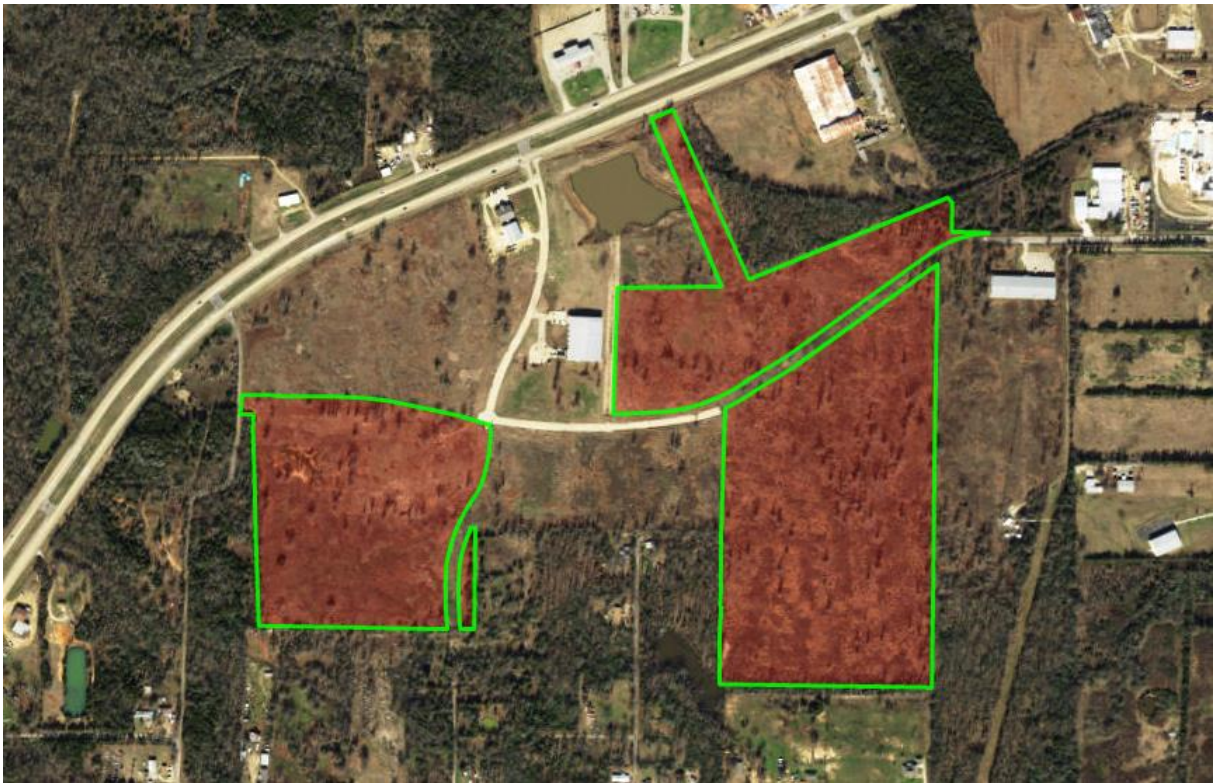


NW INDUSTRIAL PARK: PLOT 3

[Long/Lat: 33.674193, -95.591151](#)



(903) 784-6964 parisedc@paristexasusa.com

- 81.7 Acres; ability to replat
- Power (3-phase), water, sewer, and gas ready
- Owner – Paris EDC
- Location: [NW Industrial Park](#)
- Expedited Permitting